

ARM LINK SUITE FOR SAP™

Integrated documents and index information



tecmasters.net

solutions for the .net Enterprise



tecmasters.net



ACTIVE ARM LINK FOR SAP

JOIN SHAREPOINT AND SAP

You use SAP along with Microsoft SharePoint Server 2007/2010/2013 and are wondering how these two worlds can be made to work together in the most flexible, and cost-efficient way.

ARM Link Suite for SAP is a family of products which facilitate the transfer of data and documents between a SAP environment and your chosen Microsoft environment.

SAP data is made accessible in SharePoint.

The product allows a comprehensive search for both documents from SharePoint as well as from SAP.

Deploying the ARM Link Suite for SAP optimizes your existing investment in SharePoint and SAP.

MODULAR CONSTRUCTION

ARM Link Suite for SAP is composed of three self-contained modules. ARM Link for SAP, Active Indexer for SAP and Active Extractor for SAP. The modules, depending on requirements, can be used separately and individually licensed.

SCALING

The products of the ARM Link Suite for SAP family also scale data sizes and quantities of documents. For high-performance processing, the communication between the two systems, is multi-threading optimized.

SECURITY

Document access protection is undertaken by the SAP system. ARM Link Suite for SAP controls the permissions for document saving in the SharePoint Server.

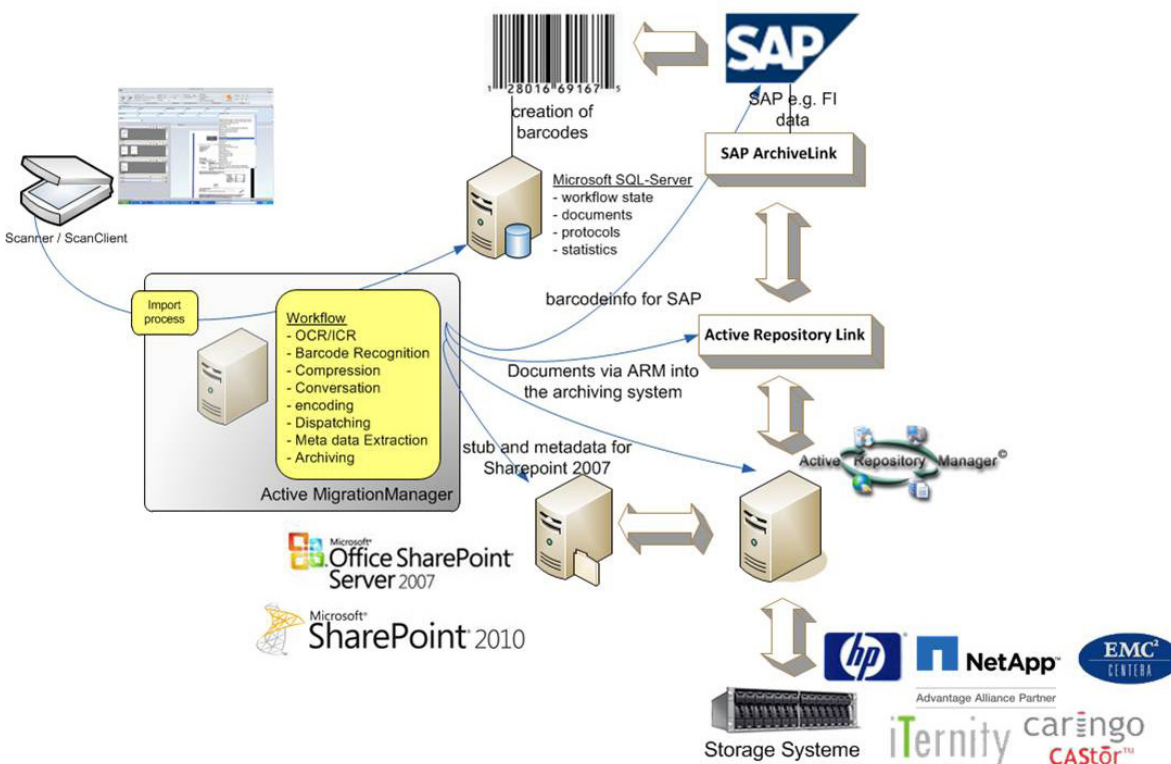
Microsoft Partner

- Gold Communications
- Gold Server Platform
- Gold OEM
- Silver Collaboration and Content
- Silver Hosting



SAP® Certified
Integration with SAP Applications

Archiving SAP documents via ArchiveLink with SharePoint connectivity.



ARM LINK SUITE FOR SAP™

Integrated documents and index information



tecmasters.net

ACTIVE ARM LINK FOR SAP

Microsoft Partner

- Gold Communications
- Gold Server Platform
- Gold OEM
- Silver Collaboration and Content
- Silver Hosting

Configuration server (SCHUH-W03S)

Applications | Registered applications | Event log | Compliance log | Workflow Monitor

ARMLink Edit
Settings for ARMLink a http Content Server to associate an ARM Repository to a SAP repository

Settings Edit

Filename	Name	Description	Last modified
General configuration			
Config	Configuration		5/12/2009 5:59:50 PM
Repository			
SA	SA	Sofortänderungen	3/29/2011 3:15:23 PM
SP	SharePoint-Repository sap	document library sap for storing documents	3/29/2011 5:51:23 PM
TM	TX	tecmasters	2/9/2011 6:01:34 PM
XX	SharePoint Repository	name of repository	7/25/2011 6:05:58 PM

Settings - tmarm Edit

Filename

General configuration

Config

Licenses

SCHUH-W03S - ARMLink
SN=RHVVTUK6URL6J, Custo

ARMLink Server Info

serverStatus	running
serverVendorId	tecmasters GmbH
serverVersion	2.0
serverBuild	2.0.0.10
serverTime (UTC)	16:07:26
serverDate	2011-07-25
serverStatusDescription	online licensed
pVersion	0045
ARMLink Configuration	config

Repository	Description	Status	StatusDescription	Repository	Configuration
TM	- Ver. 1.0 (1.0.0.2)	running	Server: 'schuh-w03s' Repository: 'sql' Folder: '{REPOS}/{YEAR}/{DAY}'	sql	tm
SA	- Ver. 1.0 (1.0.0.2)	running	Server: 'schuh-w03s' Repository: 'sql' Folder: '{REPOS}/{DAY}'	sql	sa
SP	- Ver. 2.0 (2.0.0.10)	running	Repository is online	repos	sp

ARMLink Administration Manual

Configuration and information (HTML)

ARM LINK FOR SAP

ARM Link for SAP connects the SAP system with SharePoint 2007/2010/2013 via the http content server interface.

ARM Link for SAP supports various SAP Archive Link and Content Server available features.

ARCHIVING

Using the Message Control for SAP any SAP generated documents such as reminders, invoices or delivery notes can be automatically saved in SharePoint and can be then fully accessed by both environments .

This allows for the building of consolidated filing.

Duplicate saves or version conflicts can thus be avoided.

EFFICIENT PROCESSES

ARM Link for SAP enables cross-system Workflows. With ARM Link for SAP, users who are not necessarily SAP users, are integrated into processes which require access to SAP data.

ARM LINK SUITE FOR SAP™

Integrated documents and index information



Microsoft Partner

- Gold Communications
- Gold Server Platform
- Gold OEM
- Silver Collaboration and Content
- Silver Hosting



tecmasters.net

ACTIVE INDEXER FOR SAP

TIME SAVING, STORAGE AND SEARCH

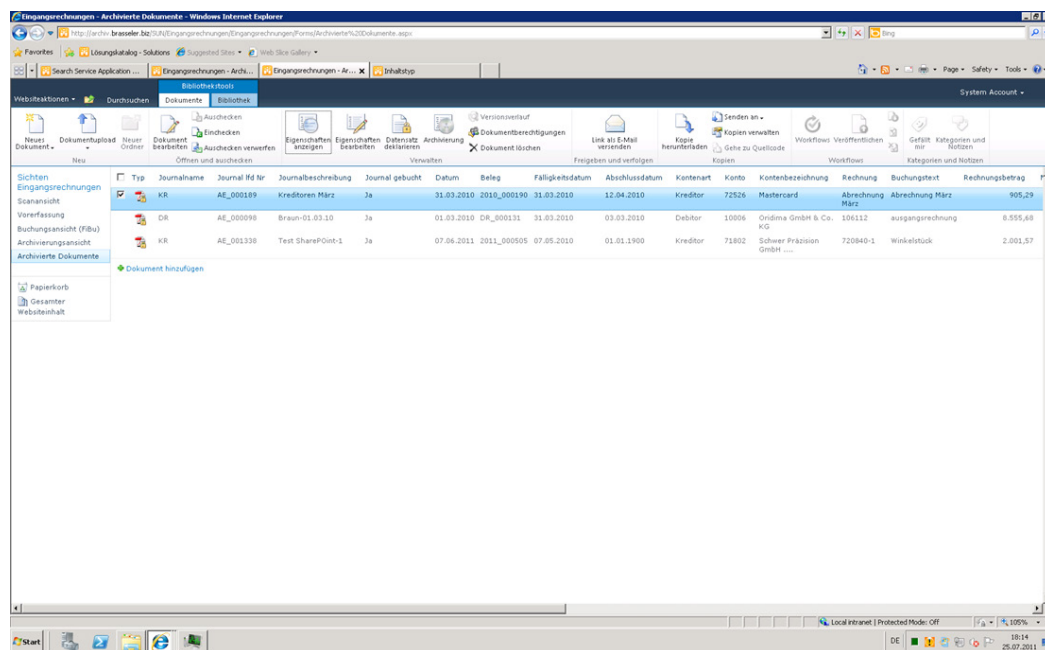
All linked documents are stored centrally in SharePoint Server 2007/2010/2013. A search can be made in either SharePoint or SAP and the results are displayable in both systems.

ACTIVE INDEXER FOR SAP

When using Document Management with SAP the search for documents is integrated using diverse search settings or directly from within

the document or transaction data. NON-SAP users can only make unstructured document searches in SharePoint Server 2007/2010/2013. Active Indexer for SAP activates automatic index runs to include any metadata such as document number, delivery note number or customer name from SAP. These are then also available in SharePoint Server 2007/2010/2013 with full accessibility and description.

Document libraries enriched with metadata from SAP



INDEXING

Indexing runs, including any meta-criteria from SAP documents can be set and already established indexing runs can be expanded.

RESULT SURE SEARCH

A structured document search can be made by supplementing meta-criteria (index).

INDIVIDUAL REPORTS

With SharePoint 2007/2010/2013 individual views are generated. These are based on the index criteria that the Active Indexer for SAP can provide.

Personal documents lists can therefore be specially created according to desired filter criteria (e.g. reminders after date due).

ARM LINK SUITE FOR SAP™

Integrated documents and index information



Microsoft Partner

- Gold Communications
- Gold Server Platform
- Gold OEM
- Silver Collaboration and Content
- Silver Hosting



tecmasters.net

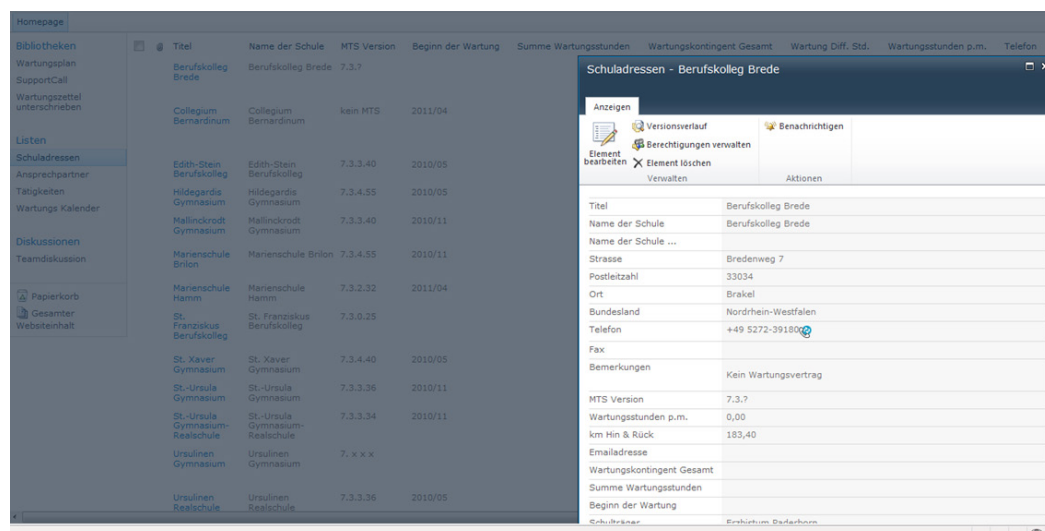
ACTIVE EXTRACTOR FOR SAP

ACTIVE EXTRACTOR FOR SAP

SAP tables can be read with Active Extractor for SAP. The product extracts from SAP, any metadata, and is then makes this available for verification processes. Lookup lists, (Suppliers, order data etc.), Workflow and form processing (procurement, input invoice processing, CRM.etc.), are then available directly in the SharePoint Server.

Associated address data list extracted from the SAP system.

Linked list!



EASY ADAPTATION

Active Extractor for SAP is very simple to adapt to individual company requirements. It is then possible, without additional programming, to configure additional tables for the acquisition from SAP into SharePoint.

FLEXIBLE CONTROL SYSTEM

Control of the reading of tables can be setup manually or automatically.