



tecmasters.net

ACTIVE SEARCH

An advanced Silverlight Search Web Part offers the Microsoft SharePoint Server 2010 search extreme comfort and extended configurability.

ACTIVESHAREPOINTSOLUTIONSILVERLIGHTWEB PART

To facilitate searching the default search application of Microsoft Office SharePoint Server 2010 in a more comfortable process, we have expanded the standard search of SharePoint Server 2010 with functionalities that offer a full text search, a wildcard search and the use of logical operators. Moreover, the results are presented within a structured and sortable grid.

THE SOLUTION

tecmasters has expanded significantly the search functionality based on the standard Sharepoint 2010 search. Highlights of the Active Search Silverlight Web Parts are:

- Silverlight Web Part for SharePoint 2010
- Integrated Design
- Multiple search templates in a Web Part
- Full-text search
- Wildcard Search
- Nested search
- Column sorting on all columns
- Grouping / sub grouping by all columns
- Integration of SharePoint lists (lookups)
- Integration of choice fields
- Integration of taxonomic fields
- Excel export
- Saved searches
- Save Last Settings
- Result Grid (Hit List) with functions for sorting, filtering and grouping of each result column

Using a specially developed web part (an application extension) it is possible to implement almost any form of wildcard search. A number of other interesting features are already road mapped as extensions. Additionally, operators provide such terms as „and“, „or“ and „no“ for simple and broad combining in multiple search terms.

To remain within the adapted search standard in SharePoint and to achieve the highest possible performance, all modifications and enhancements are based on the standard search of Sharepoint Server 2010. Thus, the function of search indexes and future functionalization is guaranteed to be upward compatible with later releases.

An additional feature is the ability of a Search Web Part to be set up inside any server configured search area (or scope) thereby allowing also the extent of the results to be configured as target-oriented. The search results are then shown in a flexible grid display within which it is easily possible to further sort and filter according to any specific requirements.

Utilizing an integrated designer, the administrator is able to set up the Search Web Part according to user needs. Within a graphical interface, and without further knowledge of the scope, the search fields and also the results can be clicked and easily configured.

For ease of installation, all steps are automated. After successful installation on a central server the Web Part can be embedded in all required SharePoint pages simply by mouse click.

Microsoft Partner

- Gold Communications
- Gold Server Platform
- Gold OEM
- Silver Collaboration and Content
- Silver Hosting



What further features are planned?

- Search and results support for BCS
- FAST Search
- Vizeit Preview

ACTIVE SEARCH™

Easy adaptability, grid display with Silverlight Controls.



Microsoft Partner

- Gold Communications
- Gold Server Platform
- Gold OEM
- Silver Collaboration and Content
- Silver Hosting

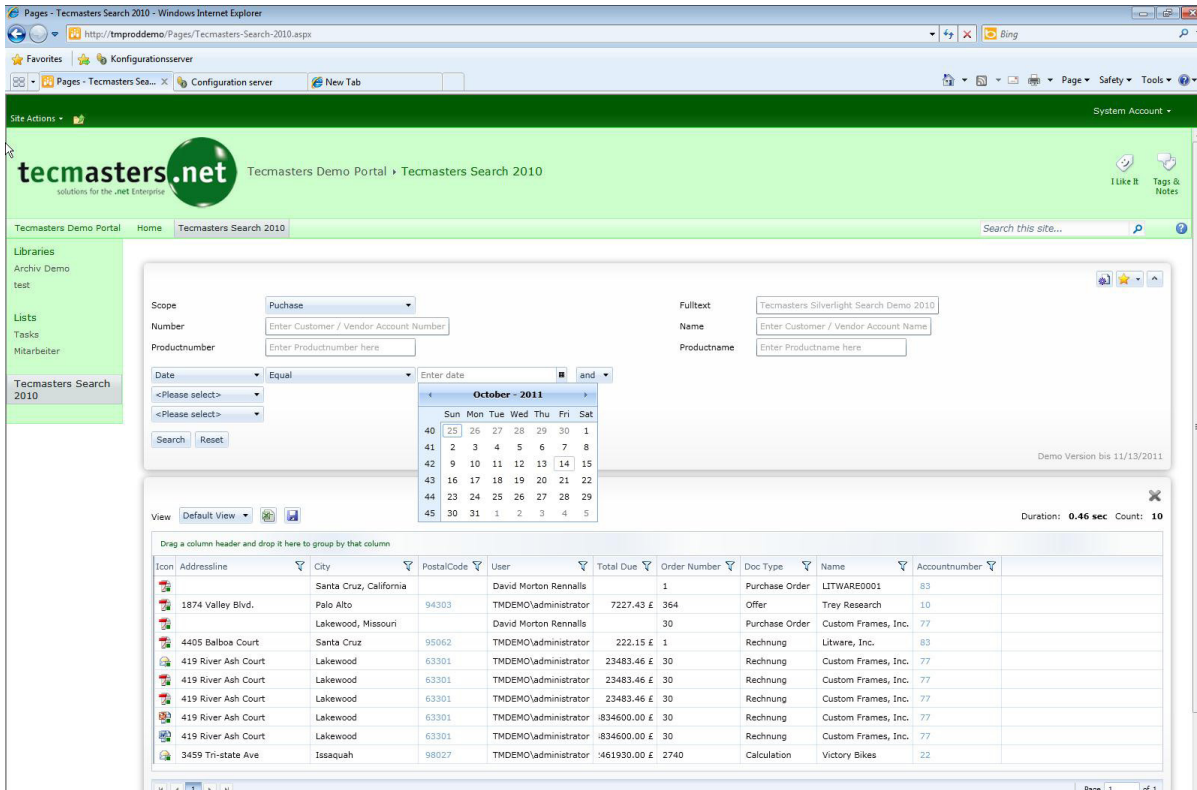


Fig 1. Search Web Part with Hit List Grid

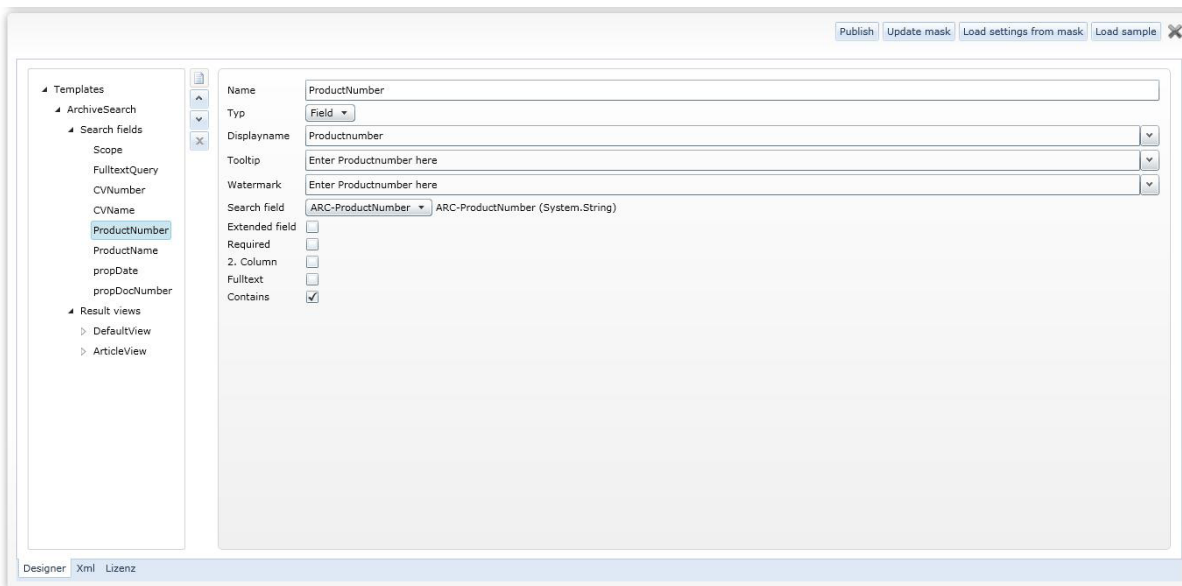


Fig 2. Search Designer Editor